

INTRODUCING ROBO EXHIBITOR



REMOTELY EXPLORE EXHIBITIONS

IN THE MODERN AGE!!!



PRESENTED BY





Content

01 Who are we?

Our Company | Focus

02 The Project

Background | Objective

03 Roboexhibitor

Features | Tech Approach | Functionalities

Who are We?

Molekiu Limited is a company which provide end-to-end robotics solutio

We provide :

- 1) Robots**
- 2) Cloud & Mobile Applications**
- 3) Hardware Support**
- 4) Our Experience**

In Implementation as part of our solutions to create

- 1) New Revenue Source**
- 2) Reduced Costs**
- 3) Improved Customer Experience for our clients**



Our Focus

- We focus on developing Robotic Cloud Services, which are compatible with robots from multiple manufacturers
- This is what makes us different from a typical robotics company. We don't manufacture robots, we provide end to end robotic solutions and cloud services which can be used by robots from different companies
- Example platforms that we have built in the past include:
 - RoboConcierge- A Cloud platform that enable our robots to manage the robot, which includes the scheduling of robot tasks, the routes of the robots and the promotion materials that it should display
 - RoboSecurity - A Cloud platform that enable live monitoring and conduct analysis
- Building platforms as such enable our robots to extend their functionalities of which they were designed and built for



THE PROJECT

Background I Objective



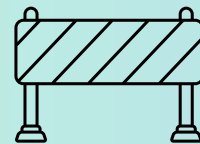
BACKGROUND

Budget Constraint

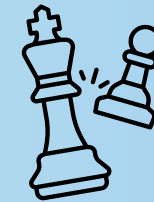


- High travel expenses for international attendees
- Potential discouragement from attending due to costs
- Decreased international exposure for the exhibition

Physical Barrier



- Attendees from other countries or regions face long travel times.
- Causing inconvenience for these attendees.
- Inconvenience could discourage attendance and impact overall participation.



Increased Competition

- Popularity of virtual platforms (social media, online marketplaces, webinars, online conferences) increasing
- Convenience compared to physical exhibitions



Time Constraint

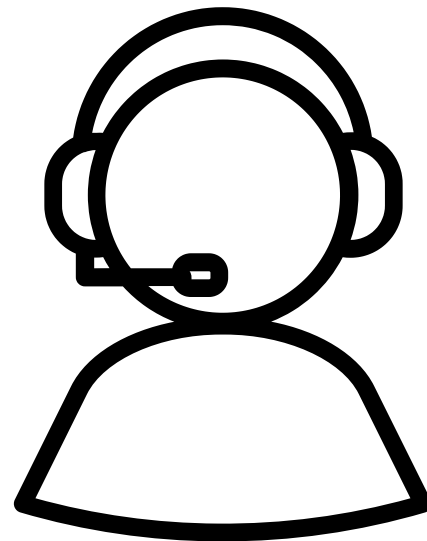
- Conflicting timetables or inconvenient exhibition periods hinder participation.
- Early or late schedules pose challenges for attendees.
- Limited availability or being constantly on the go limits participation duration.

Objective

To do list: **1**

Customer Service

1. Guide customers to specific booth in location
2. Promote upcoming events
3. Connect customers to Service



To do list: **2**

Real time engagement

1. Audio and visual communication with the staff in the exhibition
2. Ensure clear, real-time communication
3. Start conversation with staff in the booth



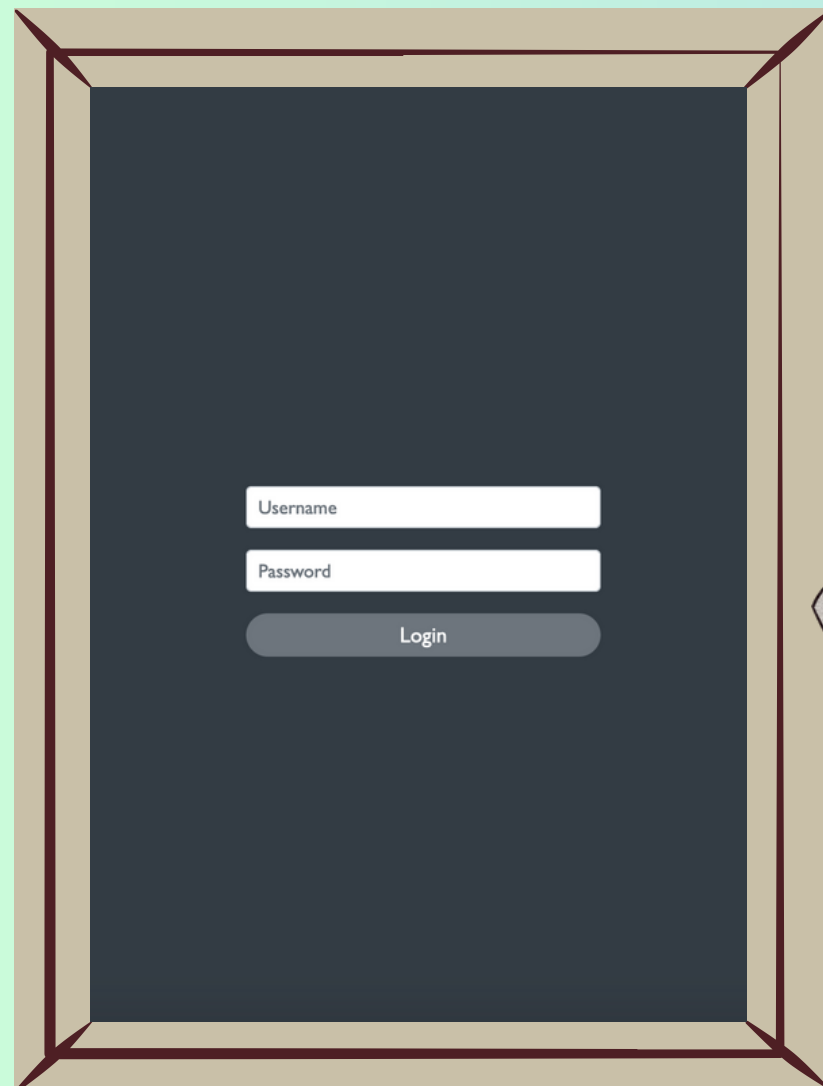
Features | Tech Approach | Functionalities

ROBOEXHIBITOR



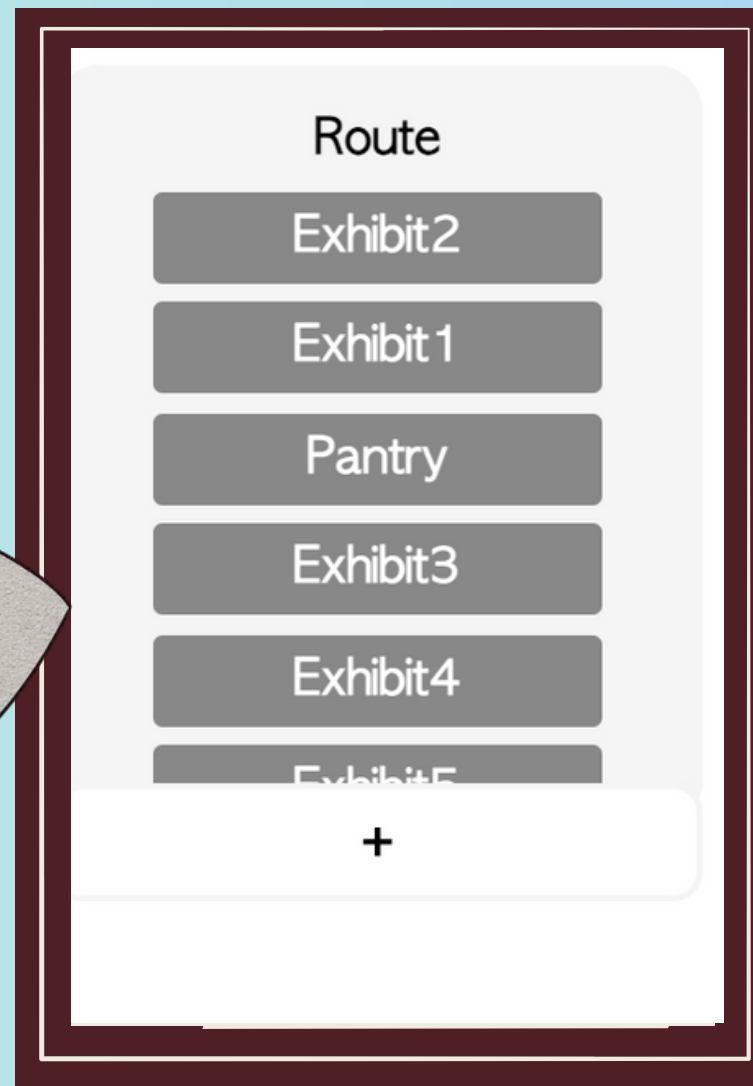
1

Log in to our website



2

Click the different paths & choose the booth you want to visit



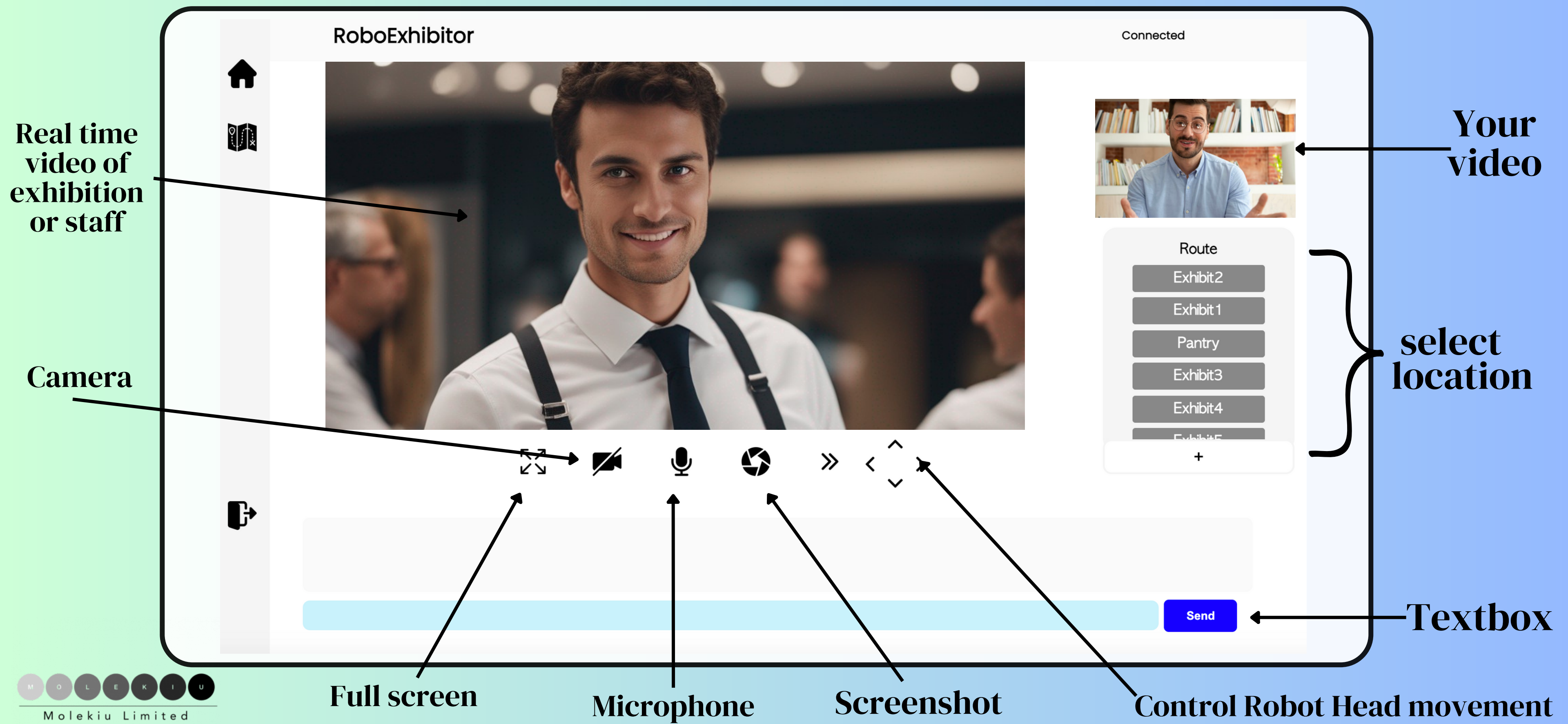
3

Interact and enjoy the exhibition!!!



Roboexhibitor's User Flow

User Interface



Features



Textbox feature

allows attendees to type their inquiries, promoting clear interaction. Exhibition staff can respond to these inquiries, providing attendees with the information they seek.



Audio

communication
enables real-time interaction between attendees and exhibition personnel, facilitating clear and immediate conversation.



Path finding

Remote attendees can effortlessly navigate the exhibition floor. With a simple click, the robot autonomously go to their desired booth, and the attendees would be able visit the booth successfully.



Video-call

communication
Enables real-time exhibition viewing and interactive communication with staff, providing a professional and immersive remote experience.



ADVANTAGES

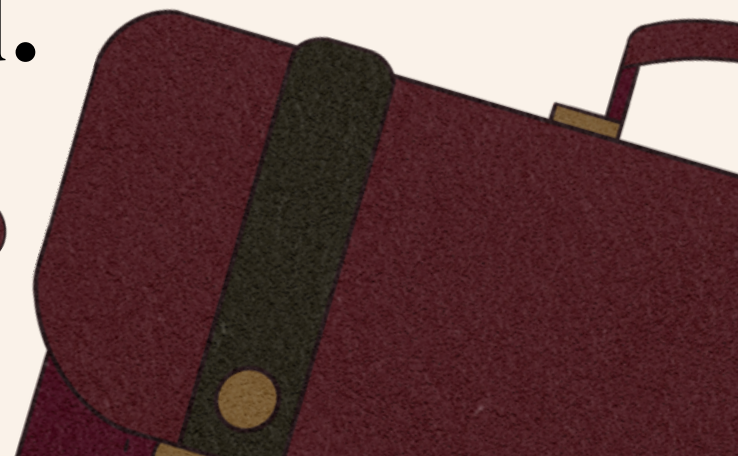
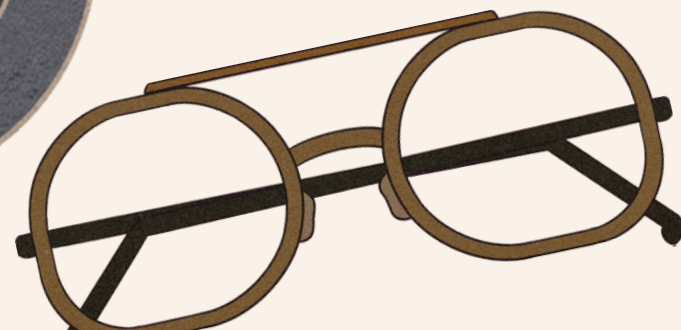


SANDRA HARO

Advantage: Cost Saving



- Robot and remote exhibitions reduce travel, accommodation, booth rental, and shipping costs.
- Exhibitors can participate remotely, eliminating the need for physical presence.
- Significant cost savings for exhibitors.
- Expenses associated with physical materials are also reduced.



Advantage: Convenience

- Remote exhibitions offer flexibility in terms of time and availability.
- Exhibitors and attendees can access content and interact at their convenience.
- Eliminates scheduling conflicts and time zone limitations.



Advantage: Accessibility & Reach



- Robot and remote exhibitions overcome geographical limitations.
- Participants can join from anywhere in the world without travel.
- Expands the potential audience for exhibitions.
- Increases accessibility for individuals unable to attend in person.

Advantage: Data Collection & Analysis

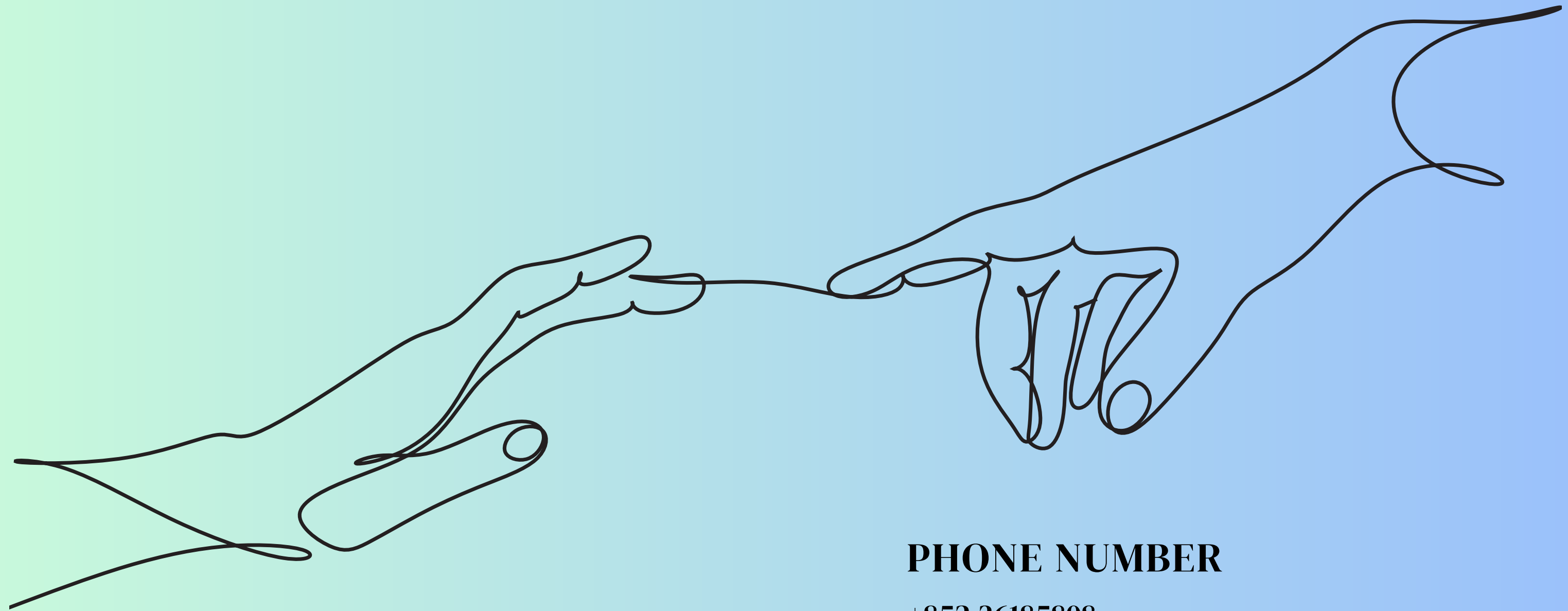
- Digital platforms for robot and remote exhibitions capture attendee engagement data.
- Data analysis provides insights and improves future exhibitions.
- Personalizes the experience for participants based on captured data.



Learn more about Roboexhibitor through our video!



Introducing Roboexhibitor



CONTACT US

We'd love to get in Touch with you!

PHONE NUMBER

+852 36185808

EMAIL ADDRESS

info@molekiu.com

WEBSITE

www.molekiu.com